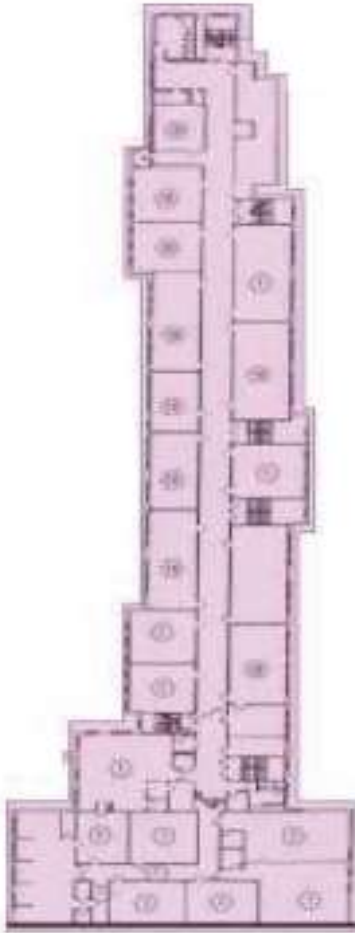


Phase II: Abatement & Demolition

Third Floor



Phase II: Abatement & Demolition

MapQuest 6-21-16



“Aero” Photo 8-25-18



Phase III: New Construction

Photo from Ox Blue camera mounted on roof of 1936 Building.



<https://app.oxblue.com/open/webber/austinhhs>

Phase III: New Construction

Drilled Concrete Piers for Building “D”



Phase: III New Construction

Aug. 31, 2018: Drilled piers, installed rebar forms, and poured concrete.



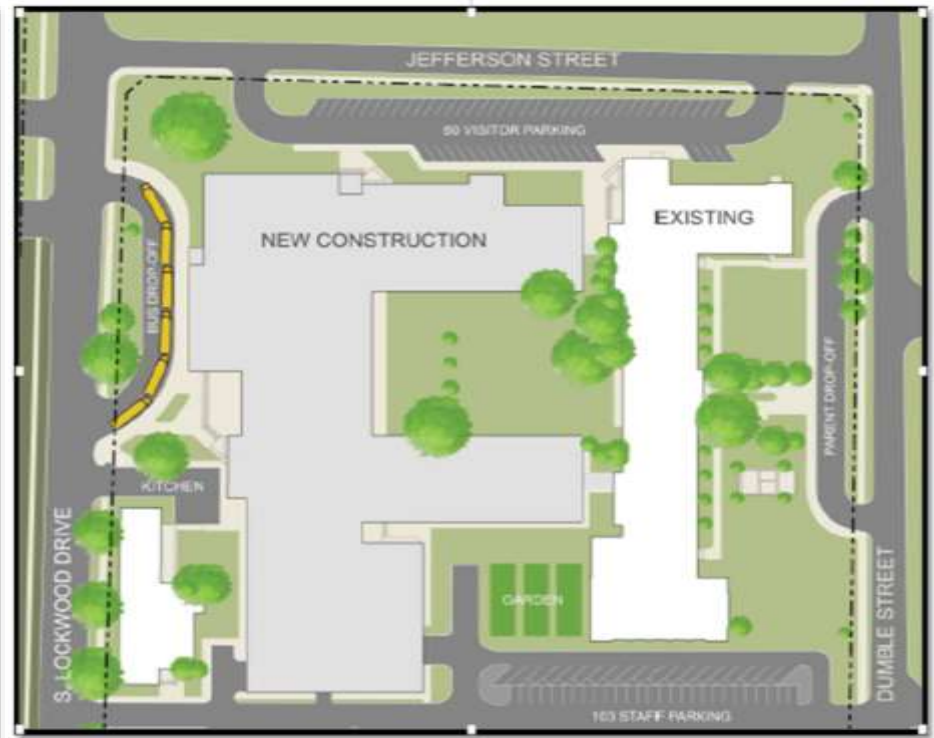
Phase III: New Construction

Sept. 9, 2018: Houston Rain....



Phase III: New Construction

Historical campus versus new campus design



Phase III: New Construction



New Construction: Drilling piers for foundations has begun in the Northwest Corner and will progress South. Underground utilities will follow.

Renovation of the 1936 Building will begin on the North end of the 3rd floor, after final abatement and demolition are finished, and will progress from the 3rd floor to the 1st floor.

Phase III: New Construction



Phase III: New Construction



Click Here to see the construction
feed:

<https://app.oxblue.com/open/webber/austinhhs>